

linzhou Public Service Railway Equipment Manufacturing Co.,Ltd

----- *Over 42 years experience*

Rail Fastening System

Rail Clip

Rail Joint&Rail Fishplate

Rail Tie Plate

Rail Clamp

Rail Shoulder

Screw Spike

Rail Bolt

Rail Gauge Rod

Rail Anchor

Rail Pad

other Rail fasteners

Rail Fastening System

1,SKL3/SKL12/SKL14 Fastening System



Specifications for One Unit of SKL type rail fastening system

Item	Quantity	Material
SKL tension clip	2	60Si2CrA,60Si2MnA,38Si7
Ss35 Screw Spike	2	Grade 4.6;Q235
		Grade 5.6;35#
		Grade 8.8;45#
Flat washer	2	Q235
Plastic dowel	2	HDPE,Reinforced Nylon 66(PA66)
Guide plate	2	Reinforced Nylon 66(PA66)
Rail Pad	1	EVA or Rubber

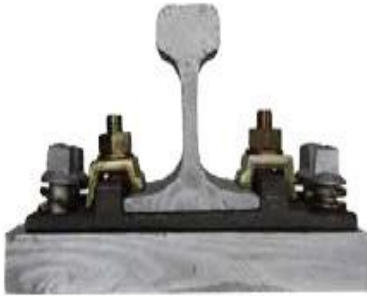
2,E-Clip Fastening System



Specifications for One Unit of E-Clip fastening system

Item	Quantity	Material
E-clip	2	60Si2CrA,60Si2MnA,38Si7
Shoulder	2	QT500-7,QT450-10
Rail Pad	1	HDPE,Rubber or EVA
Insulator	2	Reinforced Nylon 66(PA66)

3,KPO Rail Fastening System



Specifications for One Unit of KPO fastening system

Item	Quantity	Material
KPO clip	2	60Si2CrA,60Si2MnA,38Si7
Screw spike	2	Grade 4.6;Q235
		Grade 5.6;35#
		Grade 8.8;45#
HS BOLT	4	Grade 4.6;Q235
		Grade 5.6;35#
		Grade 8.8;45#
HEX NUT	2	Grade 5;35#
		Grade 8;45#
Double coil spring washer	2	65Mn

4, Spring Blade Fastening



Specifications for One Unit of Spring Blade fastening system

Item	Quantity	Material
Nabla clip	2	60Si2CrA,60Si2MnA,38Si7
Insulator	2	Reinforced Nylon 66(PA66)
Screw Spike	2	Grade 5.6;35#
Spring washer	2	ML08AL

5,Rail Spike Fastening System



Specifications for One Unit of Spike fastening system

Item	Quantity	Material
Track/Cut Spike	5	Q235
Tie Plate	1	QT450-10 for Casting,Q235 for rolling

6,High Speed WJ-8 Rail Fastening System



Specifications for One Unit of WJ-8 Rail fastening system

Item	Quantity	Material
Rail clip	2	60Si2CrA,60Si2MnA,38Si7
Screw Spike	2	20MnTiB
Flat washer	2	Q235
Rail insulator	2	Reinforced Nylon 66(PA66)
Guide plate	2	Reinforced Nylon 66(PA66)
Rail Pad	1	EVA or Rubber
Tie Plate	1	QT450-10
Plastic dowel	2	HDPE,Reinforced Nylon 66(PA66)
Rail Adjustable Pad	2	PE
Tie Plate Adjustable Pad	2	PE

7,High Speed WJ-7 Rail Fastening System



Specifications for One Unit of WJ-7 Rail fastening system

Item	Quantity	Material
Rail clip	2	60Si2CrA,60Si2MnA,38Si7
T-bolt nut washer	2	Q235
Insulator buffer plate	1	Rubber
Rail insulator	2	Reinforced Nylon 66(PA66)
Anchor bolt	2	Q235
Rail Pad	1	EVA or Rubber
Tie Plate	1	QT450-10
Spring washer	2	60Si2MnA
Plain washer	2	QT450-10
Plastic dowel	2	HDPE,Reinforced Nylon 66(PA66)

8,High Speed Type V Rail Fastening System



Specifications for One Unit of Type V Rail fastening system

Item	Quantity	Material
Rail clip	2	60Si2CrA,60Si2MnA,38Si7
Screw spike	2	20MnTiB
Flat washer	2	Q235
Space Pieces	2	Q235
Gauge apron	2	Rubber
Rail Pad	1	EVA or Rubber
Adjustable pad	1	PE
Plastic dowel	2	HDPE,Reinforced Nylon 66(PA66)

9,Type V Rail Fastening System



Specifications for One Unit of Type IV Rail fastening system

Item	Quantity	Material
Rail clip	2	60Si2CrA,60Si2MnA,38Si7
Rail insulator	2	PA66
Rail shoulder	2	QT450-10
Rail Pad	1	EVA or Rubber

10,Clip III Fastening System



Specifications for One Unit of III Rail fastening system

Item	Quantity	Material
Rail clip	2	60Si2CrA,60Si2MnA,38Si7
Rail insulator	2	PA66
Rail shoulder	2	QT450-10
Rail Pad	1	EVA or Rubber

Clip III Fastening system applies to 60KG/M rail of sleepers without shoulders,and it's a boltless system,it includes rail clips,rail shoulders and insulators

11,ClipII/Clip I Rail Fastening System



Specifications for One Unit of ClipII/Clip I Rail fastening system

Item	Quantity	Material
Rail clip	2	60Si2CrA
Sleeper screw+nut+washer	2	Q235
Rail insulator	2	Q235
Baffle board	2	PA66
Rail Pad	1	EVA or Rubber

Rail Clip

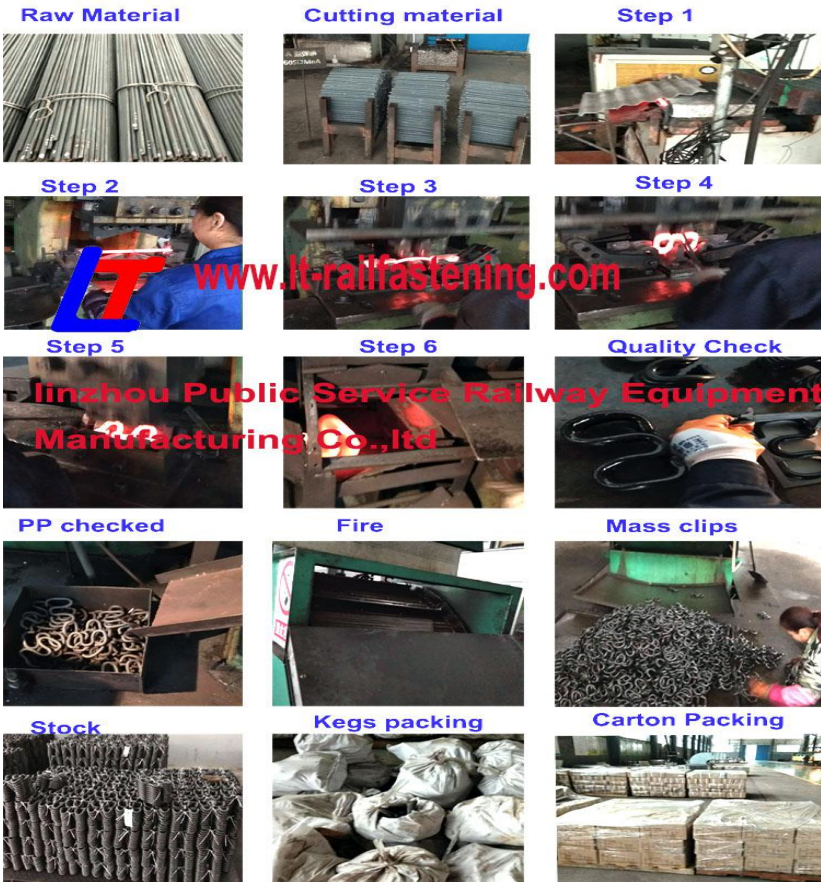
Approved by China's Railway Ministry and certified by ISO9001-2014 and SGS authorities.

Developed into a biggest production base to for various types of rail clips.

Monthly production capacity up to 5,000,000 pieces,delivery in time.

Designed with high precision by imparting strong tensile strength and corrosion resistance.

Strict dimensional control and the use of high quality spring steel but best price for each buyer.



Various kinds of rail clips of E-type(E1609, E1809, E1817, E2007, E2009, E2055, etc), SKL tension clamps (SKL1, SKL3, SKL12,SKL14, SKL75, etc), PR series, Nabla clips, gauge lock clip, Deenik clip as well as other standard and non-standard clips (e.g.Pandrol and Vossloh) can

b



Model	Diameter	Weight	Material
Type III	ø18	0.80kg/pc	60Si2MnA
E1609	ø16	0.43 kg/pc	60Si2MnA
E1809	ø20	0.61kg/pc	60Si2MnA
E1813	ø18	0.62kg/pc	60Si2MnA
E2001	ø20	0.80kg/pc	60Si2MnA
E2007	ø20	0.80kg/pc	60Si2MnA
E2009	ø20	0.80kg/pc	60Si2MnA
E2039	ø20	0.80kg/pc	60Si2MnA
E2055	ø20	0.80kg/pc	60Si2MnA
E2056	ø20	0.80kg/pc	60Si2MnA
E2063	ø20	0.80kg/pc	60Si2MnA
PR85 RAIL CLIP	ø13	0.25kg/pc	60Si2MnA
PR309A	ø19	0.85kg/pc	60Si2MnA
PR401	ø20	0.97kg/pc	60Si2MnA
PR415	ø20	0.95kg/pc	60Si2MnA
PR601A	ø20	1.03kg/pc	38Si7
SKL 1	13	0.48kg/pc	60Si2CrA
SKL 3	13	0.48kg/pc	60Si2CrA
SKL 12	13	0.53kg/pc	38Si7
SKL 14	13	0.53kg/pc	60Si2MnA
Special Rail Clip	13	0.48kg/pc	60Si2MnA
Russia Rail Clip	18	0.58kg/pc	60Si2MnA
Deenik Clip	25	0.49-0.68kg/pc	60Si2MnA
Single Anti-theft	20	0.25kg/pc	60Si2MnA

Track Spike

1. Both dog spike and screw spike available.
2. Over 30 dies available of standard GB, DIN, ISO, ANSI/ASTM, B7, BS, JIS etc.
3. Non-standard OEM is available if you provide a drawing or sample.



Specification	Material	Surface
5/8×6 "	A3,Q235,45#,55#,etc.	According to required
9/16×5-1/2 "		
3/8"×3-1/2 "		
1/2×3-1/2		
Other kinds		

The dog spike is used to fasten T-shaped rail road track to wooden ties, mainly used in North America. The common track spikes are the 5/8"*6" and the 9/16"*5-1/2" for smaller rail sections, and they are usually secured in either 200 lb. kegs or 50 lb. kegs.

Screw Spike

Railway screw spikes are usually used to fasten railway ties or sleepers and they also can be used in conjunction with plastic ferrules, casted into concrete ties /sleepers. Rail screw spikes can be various in thread profiles, lengths, diameters and drive heads based on specific geographic requirements.



Square head Screw spike



Type	Specification	Weight	Surface
Ss1/130	M22x130	0.451	Natural
Ss1/150	M22X150	0.478	Zinc
Ss2/180	M22X180	0.595	Paint
Ss5/150	M24X150	0.545	Oil
Ss6/150	M26X150	0.702	According to require
Ss7/180	M24X180	0.636	
Ss8/140	M24X140	0.528	
Ss8/150	M24X150	0.548	

Type	Specification	Material	Surface
Square head Screw spike	M22x145	45#	Natural
	M22X155	55#	Zinc
	M22X165	Q235	Paint
	M22X185	Q236	Oil
	M22X195	45#	Natural
	other kinds	35#	

Haxagon Screw Spike



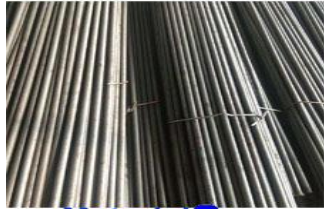
Double head screw spike



Grade	4.6	5.6	8.8
Material	Q235	35#	45#
Mechanical	Tensile strength:	Tensile strength:	Tensile strength: $\geq 800\text{Mpa}$
	Yield strength: $\geq 240\text{Mpa}$	Yield strength: $\geq 300\text{Mpa}$	Yield strength: $\geq 640\text{Mpa}$
	Elongation: $\geq 22\%$	Elongation: $\geq 20\%$	Elongation: $\geq 12\%$
	Cold bending: 90 degree		
	Without Crack		
Surface	Plain (oiled) , Oxide black, Zinc, HDG, Wax, Bitumen, Dacromet, Sherardizing		

Size	23x174
Grade	4.6 5.6 8.8 10.9
Raw Material	Q235, 35#, 45#
Surface	Plain (oiled) , Oxide black, Zinc, HDG, Etc

WORKSHIP OF Bolts&Spikes



Material



Cutting



Mould



Producing



Checking



Packing



Iron



Iron Cap



Solid

Linzhou Public Service Railway Equipment Manufacturing Co.,Ltd



Carton Packing



Warehouse



www.lt-railfastening.com

Rail Tie Plate



Invested 6USD million on the production line to produce Iron Products
Available to produce rail tie plates by forging, rolling or casting.

Most competitive forging tie plate producer in China.

Dozens of dies available for both forging and rolling.

Rail tie plate or base plate by forging:

At our plant, we own 300T~1600T forging friction press and 7 Die forging production lines with 5T electricity liquid hammers. Our forging annual capacity can reach up to 8000 tons at least, and 200,000 pieces of forging tie plates' capacity.



WORKSHIP OF TIE PLATE



Material



Iron melting



Mould



Soliding



solided



workblank



buffing



Checking



Packing



Spike tie plate
SKL system tie plate
WJ8 Tie Plate
Sleepers tie plate
K type tie plate
others type in China abroad



www.lt-railfastening.com

Linzhou Public Service Railway Equipment
Manufacturing Co., Ltd

Hook Tie Plate

Hook twin tie plate (HTTP for short) is kind of tie plate used for turnouts positioned behind the switch bottoms. They are often used in pairs to a



Up to today, our leading customers for HTTP are in north America, especially US market, following AREMA standard, with 3/4" and 1" thick varieties most popular. We have a especial workshop for HTTP with modern production lines and we are capable of producing such products for 1000MTS annually.

AREMA 3/4" thickness Htpps		
	Model	Weight(KG)
3/4" thick hook twin	L23	8.53
	L27	10.07
	L31	11.61
	LR23	8.53
	LR27	10.07
	LR31	11.61
	H23	8.66
	H27	10.21
	H31	11.75
	H35	13.29

AREMA 1" thickness Htpps		
	Model	Weight(KG)
1" thick hook twin	L29	13.93
	L33	15.97
	L37	18.01
	LR28	13.42
	LR32	15.46
	LR36	17.5
	H29	14.12
	H33	16.16
	H37	18.2
	H41	20.24

Rail Bolt



BHON TRACK BOLT

Material	Size	Grade	Surface	Standard
Q235,35#,45#,40Cr,C45	22x135	4.8,8.8,10.9	Plain (oiled), Oxide black, Zinc, HDG	BS,R54 rail in Indonesia,S1085.4- 1999, Russian, AREMA standard,
	24x135			
	24x145			
	others			



Cup Head Oval Neck Fish Bolt

Material	Size	Grade	Surface	Standard
Middle carbon steel	M18	4.8,8.8,10.9	Plain (oiled), Oxide black, Zinc, HDG	AS 1085.4, 6&7
	M20			
	M22			
	M24			



Heavy Hex Head Frog Bolt

Material	Size	Grade	Surface	Standard
A235	Dia.3/4" – 1-3/8", Length up to 30"	4.8,8.8,10.9	Plain (oiled), Oxide black, Zinc, HDG	ASTM A325



Anchor Bolt

Material	Size	Grade	Surface	Standard
Q235, C35, C45, 35CrMo,42CrMo	M16 to M48, L=100 to 500mm	4.8,8.8,10.9	black, Zinc, HDG	DIN529, ISO898-1



Tunnel Bolt				
Material	Size	Grade	Surface	Standard
Carbon steel	According to required	4.8,8.8,10.9	Plain (oiled), Oxide black, Zinc, HDG	According to required

Rail Clamp

Rail clamps are always fastened onto the rail ties with anchor bolts. For types, boltable rail clamps and weldable rail clamps are varieties.



Boltable rail clamps



Weldable rail clamps



Crane Clamp 21/050 AN/BN



Crane Clamp 22/130 AN/BN



KPO Rail Clamp



Rail clamps for North America



K type rail Clamp



MTH Clamp



Rail Shoulder



Rail Shoulders styles for China and Abroad, Also accept OEM

Rail Gauge Rod



Millions of Gauge Rod produced every day

WORKSHIP OF Gauge Rod



Material



Cutting



Mould



Producing



Checking



Packing

Linzhou Public Service Railway Equipment

Manufacturing Co.,Ltd



Others



Anchor



Rail Pad



Rail Insulator

Contact



Linzhou Public Service Railway Equipment Manufacturing Co.,Ltd

Add:South Circling Road,Yaocun,Linzhou,Henan,China

Email:Lina@lt-railfastening.com

Tel:0086-0372-6516222 Mob:0086-15137269316

Skype:sxshania Wechat&whats app:0086-15137269316